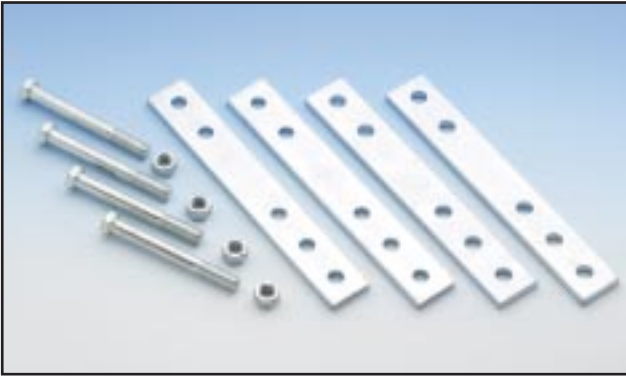


# SUSPENSION ACCESSORIES



1300▲

## ADJUSTABLE SHACKLE SET

*BOX PACKAGED*

This set helps to eliminate rear tire clearance problems. Easy to install, heavy-duty extenders are adjustable to three heights. Ideal for street use. The set is complete with grade 8 bolts and lock nuts.

Shackles are approximately 10" long with 4 ½" bolts.

### ZINC PLATED SHACKLE SET

⅞" dia. holes in shackles .....	1299
½" dia. holes in shackles .....	1300



1280▲

## UNIVERSAL COIL SPRING CONTROL

*SKIN PACKAGED*

Easy-to-install, controls may be used in place of spacers for quick, easy height adjustment. These controls can improve weight transfer. Two per set.

Universal Coil Spring Control .....	1280
-------------------------------------	------



1282▲

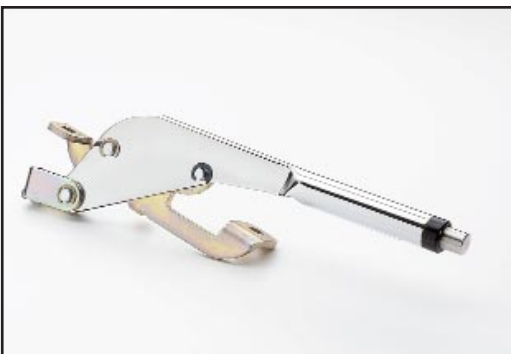
1283▲

## COIL SPRING BOOSTERS

*SKIN PACKAGED*

Mr. Gasket's easy-to-install, aluminum, twist-in Coil Spring Boosters increase spring height for improved weight transfer. Four per set.

Standard approx. 1" .....	1282
Jumbo approx. 1¾" .....	1283



5651▲

## STREET ROD HAND BRAKE

*SKIN PACKAGED*

This high quality street rod hand brake features a spring loaded ratchet action to assure proper tension of emergency brake cables without slippage. The low profile unit with its fully polished stainless steel handle is universal in design and adapts easily to most applications. Unit incorporates a push-button release for a clean, smooth look that will enhance the interior of any vehicle.

Low Profile Hand Brake .....	5651
------------------------------	------

\*Note: Legal for sale or use on race vehicles which may never be used on highways

# SUSPENSION ACCESSORIES

## FRONT RUBBER COIL SPACER

### SKIN PACKAGED

Rubber Coil Spacers are the ideal way to raise all coil-spring equipped cars without affecting handling or ride. Individually packaged. "U" cross section. Fits above or below coil.

1" lift .....1285

**Note: Requires spring removal to install.**



1285▲

## SUPER COIL SPRING SPACER

### SKIN PACKAGED

Natural rubber Coil-Spring Spacer has dual grooves to prevent popping out. The design allows easier installation, and it is the safest way to restore your car to original height. Individually packaged. "H" cross section. Fits into the coil.

1" lift .....1287



1287▲

## RAISER BLOCKS NEOPRENE RUBBER

### SKIN PACKAGED

For the enthusiast who wants to raise the car, yet maintain comfort, neoprene rubber provides a softer ride than aluminum or steel boosters.

Standard 1½" - four per set .....1281

Jumbo 2¼" - two per set .....1284



1281▲

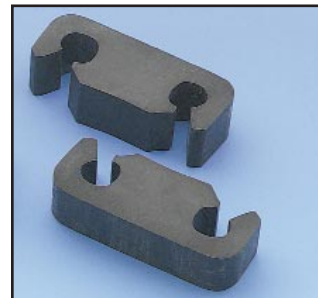
1284▲

## RUBBER COIL SPACER

### SKIN PACKAGED

Natural rubber spacers increase the height of all coil-spring cars. They are easily installed. Two per set.

2" Rear Spacer .....4334



4334

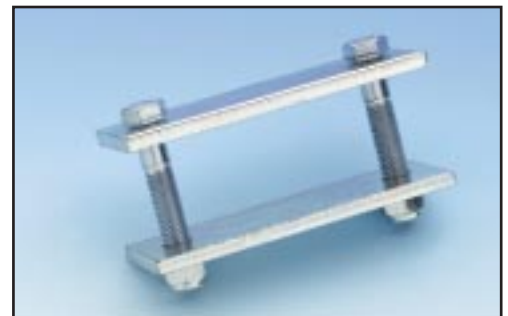
## REAR SPRING CLAMP SET

### SKIN PACKAGED

This clamp set will help to reduce wheel hop and stiffen spring rate. Self-locking nuts and H.D. steel plates prevent spring leaf movement and makes your spring act like a traction bar. The set comes with 7/16" bolts.

Rear Spring Clamp Set .....1293

1293



\*Note: Legal for sale or use on race vehicles which may never be used on highways

# SUSPENSION ACCESSORIES

## TECH TIP

Shock Extension Kit #1290 can also be used to extend 3/8"-24 shifter rods!



1290▲

### SHOCK EXTENSION SET

SKIN PACKAGED

The extension set allows up to five inches more travel for your shocks and fits 3/8"-24 shocks (stud end). Two per set.

3 1/2" long ..... 1290  
5" long—heavy duty ..... 1290A

### REAR SHOCK EXTENSIONS

SKIN PACKAGED

Made of die cast aluminum, the Rear Shock Extension allows cars that have been raised two or three inches to use stock length shocks. It fits most shocks with tie bar ends.

CAUTION: not for use with air shocks!

2 per set ..... 1289



Shocks not included

### SHOCK EXTENSIONS

SKIN PACKAGED

Stop ruining shock absorbers! Mr. Gasket's Shock Extensions allow normal shock travel when suspension modifications raise the rear end of the car. Two per set.

Fits most Chrysler applications ..... 1288



1608▲

### TRACTION BAR RUBBER BUMPERS

SKIN PACKAGED

Especially designed for use with all traction bars, these rubber bumpers have a threaded base that allows adjustment for street or track. Fits all Lakewood and most other traction bars. 3" Tall. Same as Lakewood 20530.

2 per set ..... 1608

\*Note: Legal for sale or use on race vehicles which may never be used on highways

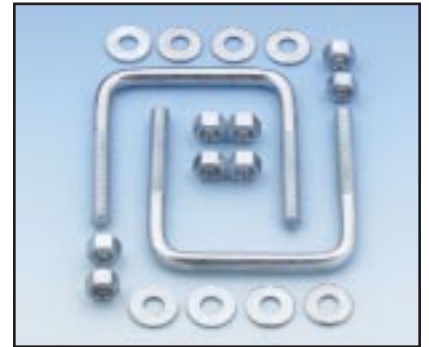
# SUSPENSION ACCESSORIES

## REPLACEMENT U-BOLT SET 3/8"

### SKIN PACKAGED

Made from quality, cadmium-plated steel, this set contains two U-bolts, eight nuts and eight washers. Mr. Gasket's U-bolts are universal in design and will fit most traction bars.

3/8" dia., 3 1/2" c-c.....**3485**



**3485▲**

## PRO PINION SNUBBER

### BOX PACKAGED

Pro Snubber is necessary to complete the suspension on a Plymouth or Dodge, providing better initial traction. Adjustable for competition or street driving, the Pro Snubber is topped off with a long-lasting rubber bumper to cushion the initial shock.

Fits Mopar 1967 and later, 8 3/4" rear axle ..... **1708**



**1708▲**

## TRACTION BAR WEDGE SETS

### SKIN PACKAGED

Mr. Gasket's Wedge Sets will allow a variation in traction bar adjustment to compensate for weak springs and chassis modification.

2°—two per set ..... **1606**  
4°—two per set ..... **1607**



**1607▲**

## REAR HOUSING SPRING PADS

### SKIN PACKAGED

These weld-on spring pads can be used on rear axle housings that have three inch diameter axle tubes, such as Dana 60, 12-bolt Chevrolet, etc. Two spring pads per set.

2 1/2" wide, 5 3/4" overall length.

Rear Housing Spring Pads ..... **6280**



**6280▲**

\*Note: Legal for sale or use on race vehicles which may never be used on highways

# DRIVELINE ACCESSORIES



3855G▲

## ADJUSTABLE CLUTCH FORK PIVOT BALL

SKIN PACKAGED

PAT. NO. 3,983,983

This handy item allows the adjustment of the release fork height when the clutch assemblies are changed. It's highly recommended for use with Lakewood Bellhousings. Same as Lakewood 15501.

All GM.....**3855G**



15500▲

## CLUTCH FORK FOR GM APPLICATIONS

SKIN PACKAGED

This heavy duty replacement clutch fork fits most popular GM intermediate applications and is a direct replacement for GM Part #'s 340278, and 14066235. Constructed of .165" thick heavy gauge stamped steel, this clutch fork offers more strength than the original factory unit and has an attractive durable zinc dichromate finish which resists rust.

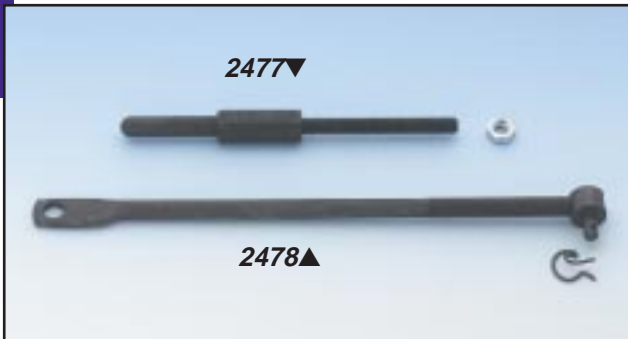
Clutch Fork for GM Applications .....Lakewood**15500**

## CLUTCH LINKAGE

SKIN PACKAGED

Manufactured from 4140 chrome moly material, heat treated and plated, this clutch linkage will give you the confidence needed for positive clutch release and power shifting. It's highly recommended for use with Hays clutches.

1967-81 Camaro and Firebird,  
3/8"-16 (long linkage), 7" Long .....**2477**  
1955-75 Chevrolet, all with  
clevis pin attachment 10.5" Long.....**2478**



## PILOT BEARINGS

SKIN PACKAGED

Worn pilot bearings can cause hard shifting and increase transmission wear. When changing your clutch, be sure to use a new pilot bearing for best results.

Roller Pilot Bearing for GM Applications reduces parasitic drag. Direct replacement for all Chevrolet V-8 applications.

GM applications Roller Pilot Bearing .....Lakewood**15977**

Bronze (factory style)  
Fits all Chevrolet V-8 applications,  
replacement .....Lakewood**15976**



15976▲

15977▲

\*Note: Legal for sale or use on race vehicles which may never be used on highways

# DRIVELINE ACCESSORIES

## RING GEAR SPACERS WITH BOLTS

### SKIN PACKAGED

Mr. Gasket's complete line of stamped Ring Gear Spacers are precision Blanchard ground to ensure parallel surfaces for perfect alignment. Kits are complete with spacer and bolts.

Application	Spacer Thickness	Bolt Hole Dia.	Part No.
10-bolt Chevrolet, 1955-64, 10-bolt Chevelle, Camaro, Firebird, GTO, Buick Special, Olds F-85 8 1/2" Ring Gear	.255" to .265"	.437"	<b>900A</b>
GM 10-bolt rear ends	.195" to .205"	.468"	<b>908A</b>
12-bolt Chevrolet, 1965-75, 12-bolt Chevelle, Camaro, GTO and Firebird	.305" to .315"	.437"	<b>902A</b>
Mopar 12-bolt 9 3/4" Dana 60 1966-75 440 cu. in. and 426 Hemi 4-speed	.155" to .165"	.560"	<b>904A</b>

See index for Ring Gear Bolts.



**900A▲**

## 4-SPEED SYNCHRO RINGS WITH TEETH

### SKIN PACKAGED

Also available from Mr. Gasket are these OEM replacement brass rings, with teeth. Synchro Rings help to restore the original shifting smoothness to your transmission. (Sets of 4)

Muncie, 1966-74.....**937A**



**937A▲**

## SOLID TRANSMISSION MOUNT

### SKIN PACKAGED

This cast-aluminum Transmission Mount prevents engine flex and transfers torque to the chassis. It eliminates lateral movement of the engine and transmission during clutch release. All hardware for easy installation is included. Top holes are 1 1/2" on center, tapped 7/16-14. Bottom slots are 3 3/4" to 4 1/4" on center.

All GM 4-speed, all Muncie 4-speed, all Borg-Warner T-10 4-speed, all Saginaw 3-speed .....**3673**



**3673▲**

\*Note: Legal for sale or use on race vehicles which may never be used on highways