

TOOLS



1570▲



6120▲



6270▲



1015▲

UNIVERSAL DEGREE WHEEL

SKIN PACKAGED

The seven-inch diameter Degree Wheel is designed to insure maximum accuracy in camshaft installations. All necessary instructions are etched into the easy-to-read, anodized face, and it comes with two adapters for a universal fit on all engines.

Chevrolet, Ford and Chrysler products **1570**

PRO DEGREE WHEEL

SKIN PACKAGED

This 11-inch diameter Degree Wheel has color-coded scales for instant read-outs. Made of sturdy aluminum and designed to read the same as the camshaft spec card reads, it is precision degreed for accurate readings. The exhaust and intake centerline areas are also indicated and color coded. Claimed to be the best wheel on the market, it also fits many blowers.

Universal design fits $\frac{7}{16}$ ", $\frac{1}{2}$ ", $\frac{5}{8}$ " and $\frac{3}{4}$ " crankshaft bolts.

Fits most Chevrolet, Chrysler and Ford engines..... **6120**

ENGINE ROTATOR TOOL

SKIN PACKAGED

Manufactured from hardened steel, this tool fits into the harmonic balancer on Small Block Chevys to provide a positive way of rotating the engine when setting valves, locating TDC, or degreeing a cam. Tool has a 1-1/4" hex head and includes an alignment key.

Engine Rotator Tool..... **6270**

OIL DEFLECTING ROCKER ARM CLIPS

SKIN PACKAGED

Rocker arm clips keep hot oil off the exhaust manifold, off the headers and off you by deflecting oil into the engine. Valve adjustments can be easily made while the engine is running. For stock rockers only.

Chevrolet, Ford and Pontiac (set of 8) **1015**

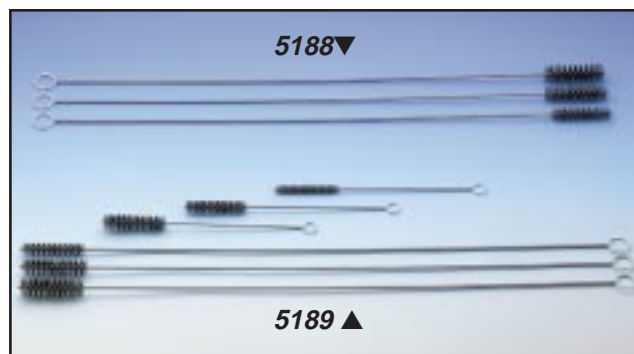
*Note: Legal for sale or use on race vehicles which may never be used on highways

ENGINE CLEANING BRUSH KITS

SKIN PACKAGED

Serious engine builders and backyard mechanics alike need these special length brushes to properly clean all the holes and passages found in most automotive engines. Available in a wide variety of diameters and lengths, each brush is made from pure stiff bristle nylon that won't soften or melt when used in conjunction with most engine cleaning solvents. To minimize bending, each handle is made from heavy gauge twisted steel wire, which also firmly holds the bristles in a spiral twist. A convenient loop on the end of each brush makes for easy hanging and storage.

- Short Brush Kit - includes one 5/16", 1/2" and 5/8" O.D. x 9" overall length brushes **1211**
- Long Brush Kit - includes one 1/2", 5/8" and 3/4" O.D. x 25" overall length brushes **5188**
- Deluxe Brush Kit - includes one 5/16", 1/2" and 5/8" O.D. x 9" and one 1/2", 5/8" and 3/4" O.D. x 25" overall length brushes **5189**



1211▲

COMPLETE ENGINE CLEANING BRUSH KIT

BOX PACKAGED

Each brush is made from stiff bristle nylon that will not soften or melt when used in conjunction with most engine cleaning solvents. Each handle is made from heavy gauge twisted steel wire to minimize bending, and a convenient loop at the end of each brush provides easy hanging and storage. Contains nine (9) assorted brushes per kit. Brush diameters range from 1/4" to 5".

- Engine Cleaning Brush Kit **5192**



5192▲

HEAVY-DUTY GASKET SCRAPER

SKIN PACKAGED

The Heavy-Duty Scraper that does the job fast and right gets block and cylinder surface clean.

- Heavy-Duty Gasket Scraper **1210**



1210▲

*Note: Legal for sale or use on race vehicles which may never be used on highways



GASKET REMOVAL KIT

BOX PACKAGED

This kit gives you the right tools for removal of gaskets from cylinder heads, engine blocks, intake manifolds, thermostat housings and water pumps. Also, ideal for removing light rust and general clean-up. Kit includes: two (2) medium and two (2) very fine grit 3" diameter discs; 3" holder pad; 1/4" mandrel for holder pad; heavy duty gasket scraper; and convenient plastic storage case.

Gasket Removal Kit **1214**

Replacement Gasket Removal Discs

Used with Gasket Removal Kit #1214. Contains two (2) each general purpose 3" diameter discs in medium grit and very fine grit.

Replacement Discs **1215**

1214▲

1215▲



FAST-FILL FUNNEL

BULK PACKAGED

This heavy-duty, unbreakable plastic, Fast-Fill Funnel has a wide mouth and narrow filler tube, with a built-in brass screen filter.

6-qt. capacity **3695**

2-qt. capacity **3697**

3695▲

3697▲



HARMONIC BALANCER INSTALLATION TOOLS

SKIN PACKAGED

This is THE tool for trouble-free installation of harmonic balancers to crankshafts. This tool is simple to use, and avoids expensive damage to thrust bearings and crankshaft snouts that may result from hammering the balancer into place. This tool presses the balancer squarely onto the crank snout, thanks to a threaded steel pilot and a sealed ball bearing. The hardened steel surfaces are protected by a black oxide finish. Harmonic Balancer Installation Tools are available for the following applications:

Small Block Chevrolet 7/16"-20 **6291**

Big Block Chevrolet 1/2"-20 **6292**

6291▲



ENGINE OIL PRIMER

SKIN PACKAGED

Priming the engine is an important precautionary measure that should be taken before you start the engine for the first time. Engineered to fit into the distributor aperture and operate with an electric hand drill, the engine oil primer pressurizes the oil system, assuring the lubrication of vital bearing surfaces.

All Chevrolet V-8 and 6 cyl., Pontiac V-8..... **3795G**

3795G▲

*Note: Legal for sale or use on race vehicles which may never be used on highways

CLUTCH PILOT TOOLS

SKIN PACKAGED

This easy-to-slip-in tool automatically lines up the clutch disc for easy transmission installation. Two color-coded tools cover most applications.

Green fits most GM cars**3655**
 Gray fits Ford 1963 and later 1 1/16" Hub**3657**



3655▲

SPLINED CLUTCH ALIGNMENT TOOLS

SKIN PACKAGED

Made from high impact plastic, these Clutch Alignment Tools speed clutch/transmission assembly by automatically aligning the clutch disc and flywheel prior to insertion of the transmission input shaft. Ideal for multiple disc clutch assemblies.

GM - 1 1/8" x 10 Spline**6940**
 GM - 1 1/8" x 26 Spline**6941**
 Ford - 1 1/16" x 10 Spline**6942**
 Chrysler - 1 3/16" x 18 Spline**6960**



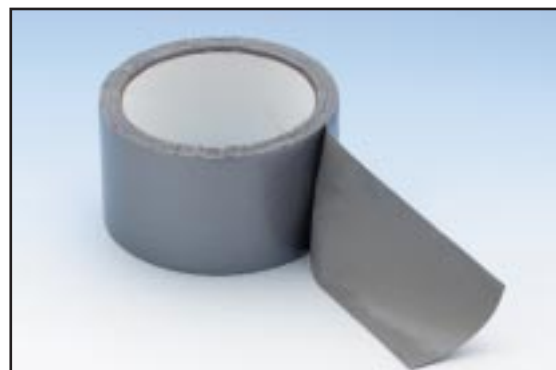
6940▲

RACER'S TAPE

SKIN PACKAGED

Mr. Gasket's all-purpose Racing Tape with the gray face is ideal for minor repairs.

2" wide—30 ft. per roll**2840**



2840▲

FENDER COVER

SKIN PACKAGED

Protect the paint on your fender from grease, scratches and nicks with Mr. Gasket's Fender Cover. This attractive vinyl cover features a non-slip back and seams, which forms a natural "pocket" that prevents tools from rolling off. Black with logos.

Fender Cover**4327**



4327▲

*Note: Legal for sale or use on race vehicles which may never be used on highways



1380▲

STEERING WHEEL PULLER

SKIN PACKAGED

This puller provides a handy, convenient way to remove steering wheels. Complete with all necessary hardware.

Fits most cars 1380



4362▲

ENGINE PORT POLISHING KIT

BOX PACKAGED

Mr. Gasket's Port Polishing Kit is designed for use on cast iron and aluminum components. This kit allows you to do your own detailed porting, polishing, and removal of flashing on all engine parts with the use of an electric drill. The kit contains (1) tapered cutting stone, (1) 1" diameter mini grind-flex flat wheel, (31) grind-polishing rolls (assorted sizes), and (3) various length mandrels.

Engine Port Polishing Kit 4362



3100▲

BLOC-CHECK® COMBUSTION LEAK TESTER

BOX PACKAGED

- Spots and locates combustion leaks quickly.
- Detects cracked or warped heads, cracked blocks, leaky gaskets.
- One minute test

It's easy! Use Bloc-Check® on the radiator opening with the engine idling. It analyzes the air in the cooling system in just seconds! The blue test liquid will turn yellow in 60 seconds if there is a combustion leak, no matter how small. Bloc-Check® can also be used to pinpoint the location of the leak simply by disconnecting one spark plug at a time and retesting.

For use with gasoline engines only 3100

REPLACEMENT FLUID

Individual 16 oz. bottle 3117



3200▲

CUBIC INCH TESTER

BOX PACKAGED

The legality of engines can be determined easily in a matter of minutes with the Mr. Gasket cubic inch tester. Guaranteed accurate to between 1/2 and 1/4 inch of total displacement, the tester can be used on any piston engine. Used by major racing associations throughout the world where engine cubic inch limitations are rigidly enforced. The kit includes all items required for the test and replacement parts are available upon request.

Universal applications 3200

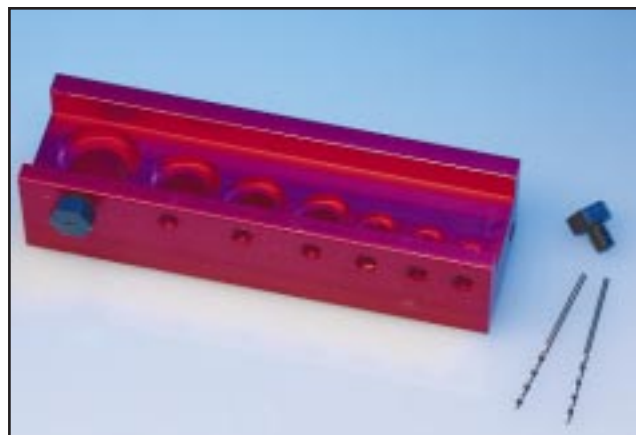
*Note: Legal for sale or use on race vehicles which may never be used on highways

DRILL FIXTURE FOR SAFETY WIRE

SKIN PACKAGED

Designed for accurate drilling of bolt heads when using safety wire, this aluminum drill fixture accommodates 3/16" - 1/4" - 5/16" - 3/8" - 7/16" - 1/2" and 5/8" dia. bolts. Supplied with two (2) case hardened threaded bushings and two (2) 1/16" Cobalt steel high speed drill bits which can also be stored in the fixture for safekeeping.

Drill Fixture for Safety Wire**8021G**



8021G▲

SAFETY WIRE TWIST PLIERS

SKIN PACKAGED

Get three tools in one with our spring loaded, automatic return, safety wire pliers. You get a cutter, wire twister and a heavy duty pair of pliers. You can grip, twist and snip safety wire faster and better than ever before. Designed for aircraft, industrial and other "vibrating" applications. The Safety Wire Twist Plier is a versatile tool to help you do reliable safety-wiring (lockwiring) rapidly and consistently.

Safety Wire Twist Pliers**8023G**



8023G▲

SAFETY LOCK WIRE

DISPLAY CAN PACKAGED

Versatile safety lock wire can be used to secure a variety of fasteners and controls from nuts and bolts to check valves, switches and modulators to prevent a loose or lost component from causing a disaster. Our safety wire is made of .032" diameter 304 stainless steel and comes in one pound cans. Caution: Safety wire should not be reused.

Safety Lock Wire**8022G**



8022G▲

*Note: Legal for sale or use on race vehicles which may never be used on highways