

SHIFTERS



7668▲

- Fits Most Passenger Cars And Light Trucks
- More Applications Than Competitive Shifters
- Ideal For Column Shifter Conversions
- Partially Assembled

3-4 SPEED AUTOMATIC FLOOR SHIFTER

BOX PACKAGED

- Features an 11" chrome plated solid steel stick with black knob, (3/8-24 thread).
- Includes shifter boot with bezel.
- Linkage and mounting hardware are Zinc plated.

General Motors

1951-73 Chevrolet Powerglide
 1960-86 Chevrolet TH250,350,400
 1949-60 Oldsmobile Hydramatic
 1960-86 Oldsmobile TH250,350,400 (Except Toronado)
 1949-60 Pontiac Hydramatic
 1960-86 Pontiac TH250,350,400
 1960-86 Buick TH250,350,400
 1983-93 GM TH700 R4,200 4R..... **7668**

Mopar

1964-86 Torqueflite 727,904 Dodge,Plymouth, Chrysler (Not to be used with push button gear selectors) **7668**

Ford

1958-86 Ford & Mercury Cruise-O-Matic D.R.
 1958-86 Ford & Mercury Ford-O-Matic D.R.
 1957-59 Ford-O-Matic D.R.
 1960-86 Lincoln,Mercury..... **7668**

Note: Will not fit FWD or Transaxle



7666▲

STREET SHIFTER 3 SPEED MANUAL FLOOR SHIFTER

BOX PACKAGED

- Features an 11" chrome plated solid steel stick with black knob (7/16-14 thread).
- Stop bolts for positive shifting.
- Includes shifter boot with bezel.
- Linkage and mounting hardware are Zinc plated.

General Motors

1964-86 Buick
 1955-86 Chevrolet std. H.D.,O.D.
 1962-86 Chevelle, Camaro, Chevy II
 1960-86 Olds std. & intermediates
 1958-79 Pontiac std. H.D.,O.D.
 1964-86 Pontiac,Firebird,Tempest, and Lemans **7666**

Mopar

1957-86 Dodge,Plymouth,Chrysler std. and Demon,Challenger,Duster **7666**

Ford

1949-83 Ford & Mercury std.
 1962-80 Fairlane,Montego, Torino Meteor,Falcon,Comet **7666**

Note: #7666 Fits all 6 cyl. H.D. & std. trans. exc. selector type (single shaft) gear boxes. Will not fit front wheel drive or 4 W.D. Also, certain applications require modification to make shifter fit.

*Note: Legal for sale or use on race vehicles which may never be used on highways

PICK-UP TRUCK 3 SPEED MANUAL FLOOR SHIFTER

BOX PACKAGED

- Features an 18" chrome plated solid steel stick with black knob, (7/16-14 thread).
- Stop bolts for positive shifting.
- Includes shifter boot with bezel.
- Linkage and mounting hardware are Zinc plated.

General Motors

1955-86 Chevrolet & GMC Pick-up7667

Mopar

1955-86 Dodge Pick-up.....7667

Ford

1955-86 Ford Pick-up7667

Note: #7667 Fits all 6 cyl. H.D. & std. 3-speed trans. (single shaft) gear boxes . Will not fit 4 W.D. and NO CEO Also, certain applications require modification to make shifter fit.



7667▲

SHIFTER BOOTS

CLAMSHELL PACKAGED

Includes trim ring and mounting screws.

Small boot measures 3 1/2" x 4 1/2"9648

Large boot measures 7 3/4" x 8 3/4"9649



9648▲

9649▲

SHIFTER BUSHING AND CLIP KITS

SKIN PACKAGED

The replacement bushings and clips, made of heat-treated steel, provide positive shifting. They are designed to replace the original bushings.

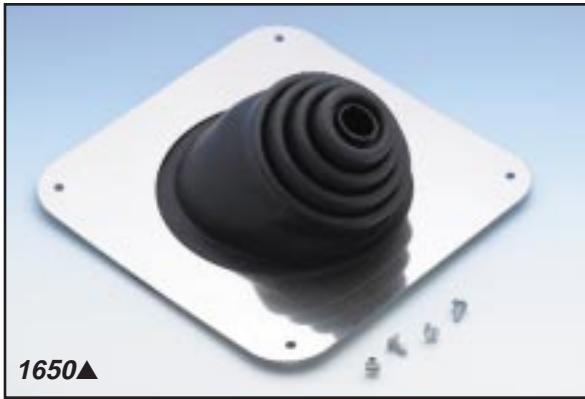
3- and 4-Speed for most Hurst shifters
(6 bushings and 6 clips)11



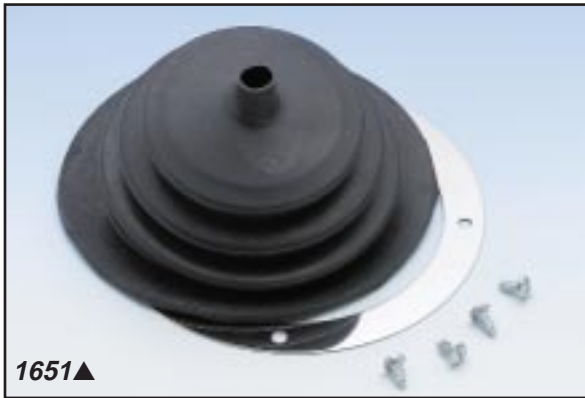
11▲

*Note: Legal for sale or use on race vehicles which may never be used on highways

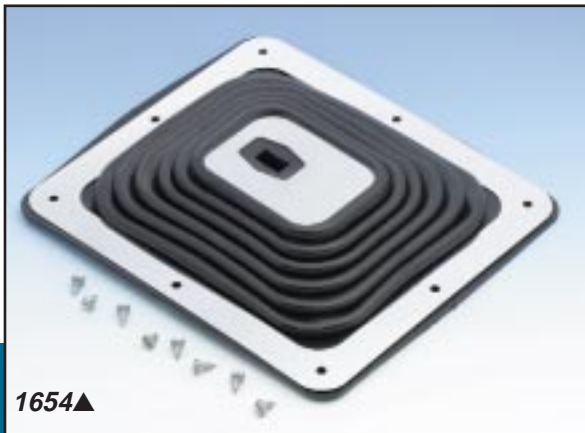
SHIFTER ACCESSORIES



1650▲



1651▲



1654▲



6357▲

SHIFTER BOOTS

SKIN PACKAGED

Shifter Boots are designed to accommodate the additional length, width and height of floor modifications in competition shifter installations. All kits include trim plate and mounting screws.

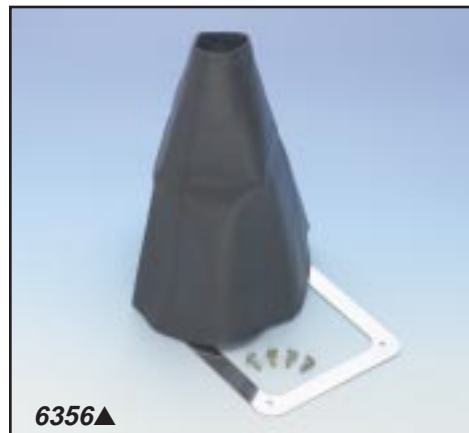
- Large round boot—8" sq. boot plate for applications when shifter handle and tower are exposed from side of floor tunnel or large hole in floor—eliminates use of a tunnel kit in most applications **1650**
- Small round boot—5½" dia. boot plate replacement for Eliminator 3-Speed shifter **1651**
- Large square boot—6½" x 7½" boot plate replacement for 3- or 4-speed Eliminator Shifter **1652**
- Pro Shifter boot, 8½" x 8" **1654**
- European style shifter boot—5½" x 6½"—simulated sewn leather boot, ideal for late model applications **6356**

EURO STYLE SHIFTER BOOTS

CLAMSHELL PACKAGED

Contemporary Euro Style Shifter Boots are now available from Mr. Gasket Company. Made from a soft pliable, black rubber material, these boots feature multiple pleats for easy resistance free shifting. Universal in design, they can be used in conjunction with most consoles or factory trim plates. 6" nominal height.

- Euro Sport Angle style—4½" x 6" base **6357**



6356▲



Refer to the Hurst Performance Catalog for a complete line of shifters and accessories, including Line-Loc's, T-Handles and more.

*Note: Legal for sale or use on race vehicles which may never be used on highways

SHIFTER ACCESSORIES

5-WAY SHIFT KNOBS

SKIN PACKAGED

For floor or column shift, these attractive knobs provide a sure comfortable grip. Finished in rich wood grain or simulated leather, these knobs come complete with multiple shift pattern inserts and bushings for universal application on domestic or import cars with 5/16" thru 1/2" diameter shift levers. Visually packaged one knob and five shift patterns per set.

- Black Vinyl 5-Way Shift Knob**9621**
- Wood Grain 5-Way Shift Knob.....**9622**



9621▲



9622▲

BLACK PLASTIC SHIFTER KNOBS

SKIN PACKAGED

Made of high-impact, high-gloss black plastic, the replacement knobs duplicate the fine quality of the original knobs that came with Mr. Gasket shifters.

- 1/2"-13 fits all Eliminator III and IV, V-Gate Pro Shifter, and Street Pro (1 1/8" dia.)"**4551**
- 3/8"-24 fits Universal 3-Speed and Automatic shifters (1 1/8" dia.) Also fits older Hurst Competition/Plus Shifters.....**4550**



4550▲



9620▲

CLASSIC WALNUT SHIFT KNOBS

SKIN PACKAGED

Add a touch of class to your shifter...Solid wood, finely sanded, and clear coated for durability, these knobs are available with or without inlayed shift pattern. Each knob is complete with multi-thread adapter or universal bushing with set screw for easy installation. Universal, fits 1/2" to 3/8" threads

- Chrome Inlay, 4-Speed Pattern**6633**
- Solid Wood Knob**9620**



6633▲

*Note: Legal for sale or use on race vehicles which may never be used on highways

SHIFTER ACCESSORIES



NEW!

9627▲



NEW!

9628▲



9625▲



9624▲

CHROME-PLATED SHIFTER BALL

SKIN PACKAGED

Originally designed as a replacement ball for the legendary 1960's muscle cars, this 1-5/8" diameter Daytona chrome-plated shifter ball is sure to add a nostalgic touch to your car. Made from solid, heavyweight metal and universal in design, the new shifter ball will fit all 5/16" to 1/2" diameter shifter sticks. Complete with adapters, set-screw and hex key for fast, easy installation.

Fit all 5/16" to 1/2" diameter shifter sticks9627

CHROME-PLATED SKULL SHIFTER KNOB

SKIN PACKAGED

Designed for the hard-core enthusiast, this skull shifter knob is sure to draw attention to any interior. Crafted from solid, heavyweight metal, it is beautifully polished and chrome-plated for long-lasting style, and will fit 5/16" to 1/2" diameter shifter sticks. Complete with adapters, set-screw, and hex key for a fast, easy installation.

Fit all 5/16" to 1/2" diameter shifter sticks9628

PISTON STYLE GEAR SHIFT KNOB

SKIN PACKAGED

This chrome plated beauty is perfect for street rods or for any vehicle that needs that certain custom touch. Quality die cast material and universal design fits 5/16" thru 1/2" sticks.

Piston Style Gear Shift Knob.....9625

COMPETITION SHIFT HANDLE

SKIN PACKAGED

This polished aluminum handle is designed for a comfortable grip and positive shifting. Black stippled inset adds contrast to any interior. Universal design fits 5/16" thru 1/2" diameter shift levers and includes bushings and set screw.

Competition Shift Handle.....9624

*Note: Legal for sale or use on race vehicles which may never be used on highways